

PROJECT BY

GREEN TRIVENI

Ashiana  
The art of home

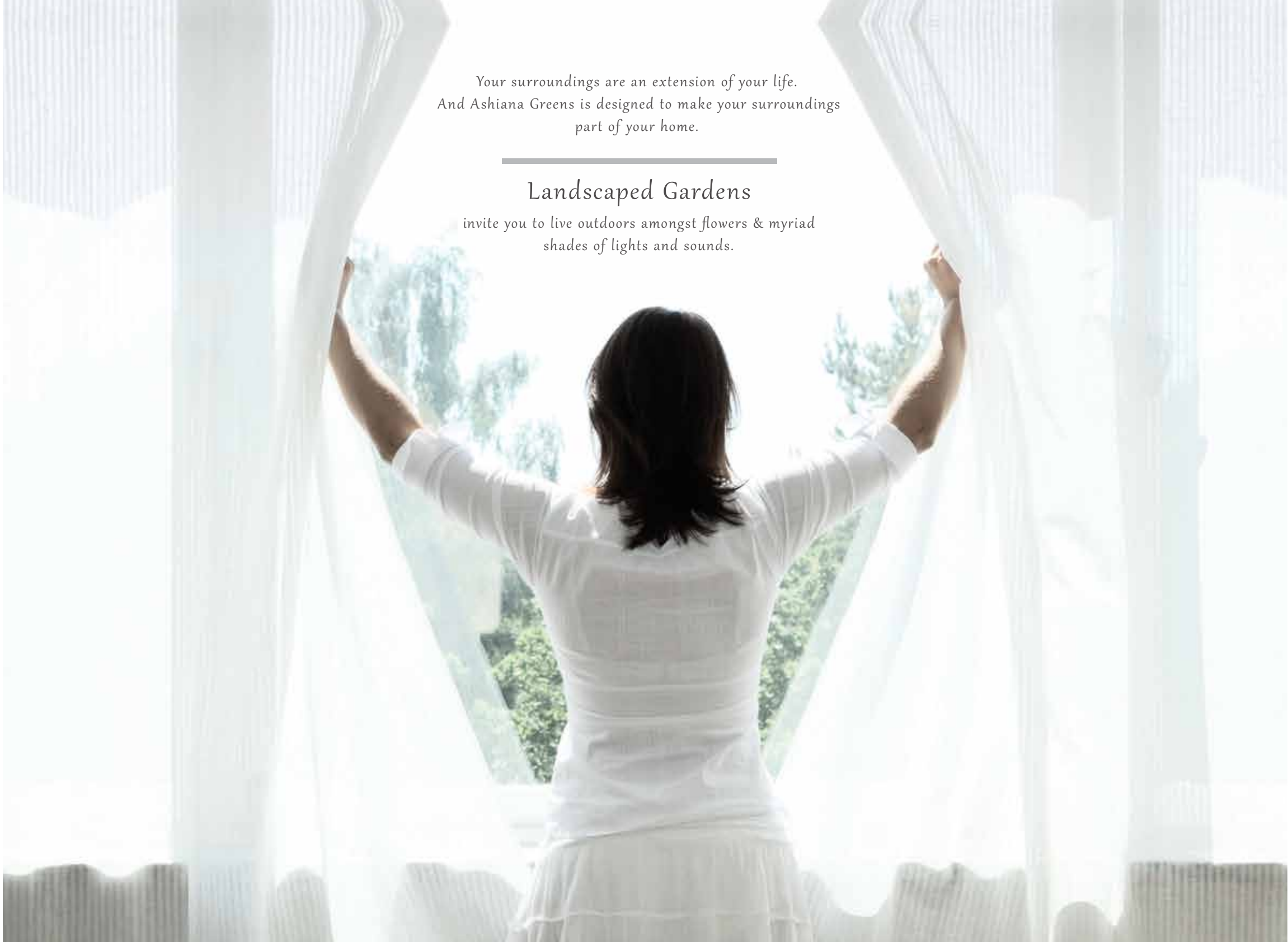


Homes that invite you to live outdoors and  
**LIVE THE GARDEN LIFESTYLE**



Ashiana  
**GREENS**

at  
SIKAR ROAD, JAIPUR

A woman with long dark hair, wearing a white long-sleeved top and a white skirt, is seen from behind. She is standing in front of a large window, pulling apart white, sheer curtains. Her arms are raised, holding the edges of the curtains. Through the window, a bright, sunlit garden with various green plants and trees is visible. The overall atmosphere is bright and airy, suggesting a connection between the indoor space and the outdoors.

*Your surroundings are an extension of your life.  
And Ashiana Greens is designed to make your surroundings  
part of your home.*

---

## *Landscaped Gardens*

*invite you to live outdoors amongst flowers & myriad  
shades of lights and sounds.*





GARDEN LIFESTYLE

# BEAUTIFUL HOMES SET IN A GARDEN

WITHIN A SECURED GATED COMPLEX



Artistic Impression



Ashiana Homes is a trusted real estate brand in Delhi NCR. Established for over 30 years, it has a proven track record of delivering quality homes and turning dreams into realities for more than 4,200 families. Investments made by customers in Ashiana Homes are absolutely safe.



# THE GARDEN LIFESTYLE HOMES



JUST THE SORT YOU ALWAYS WANTED.  
WITH WIDE, OPEN SPACES THAT PROMISE FREEDOM AND SAFETY,  
NESTLED IN ITS MODERN ENVIRONMENT. ONE THAT OFFERS  
THE BEST IN COMFORT LIVING.









## 2 & 3-BEDROOM APARTMENTS

LUSH GREEN OUTDOORS AND MODERN AMENITIES BLEND  
HARMONIOUSLY WITH THE APARTMENT BLOCK TO  
CREATE AN EXTRAORDINARY WORLD.



SPACIOUS HOMES  
with well ventilated Kitchen

Facility for  
POWER BACKUP

Multi-level  
SECURITY SYSTEM

INTERCOM  
facility

FILTERED DRINKING  
water supply



HOMES IN ASHIANA GREENS COMES WITH A  
BEAUTIFULLY MANICURED  
CENTRAL LAWN

Broad tree-lined walkways, water-bodies and  
flower beds. So you can call your home  
the best place on earth.









A HOME YOU'D LOVE COMING TO.







RECREATIONAL AND OUTDOOR SPORTS FACILITIES INCLUDE  
CRICKET PRACTICE NET WITH BOWLING MACHINE,  
BADMINTON COURT, JOGGING TRACK, AMPHITHEATRE AND  
A DEDICATED PLAY AREA FOR KIDS



ASHIANA  
ADVANTAGE

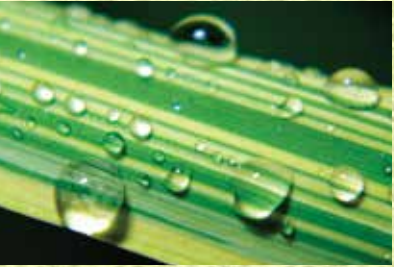
FOR US WHAT IS OUTSIDE IS AS IMPORTANT AS WHAT IS INSIDE.  
OUR HOUSING COMPLEXES ARE WIDE, OPEN AND SPACED OUT  
WITH PLENTY OF GREENERY AND MANICURED PARKS.





## HEALTHY LIVING WITH WELL-VENTILATED HOMES

Ashiana Greens layout opens up the spaces around homes to offer you the best view with maximum air and light circulation.











ASHIANA GREENS BRINGS TO YOU  
EVERYTHING THAT THE MODERN LIFESTYLE HAS TO OFFER.



ALL SET AMONG THE MOST PRISTINE ENVIRONMENT.









## Club Anandam

Come home to 'unwind'

Your own space with a  
SWIMMING POOL & SIT-OUT DECK  
GYM, GAMES ROOM, POOL TABLE  
TABLE TENNIS  
SENIOR CITIZEN LOUNGE  
TODDLER'S AREA AND  
A PARTY HALL



ASHIANA  
ADVANTAGE

WE BUILD MORE THAN JUST BEAUTIFUL RESIDENTIAL  
COMPLEXES. WE BUILD COMMUNITIES WHERE NEIGHBOURS  
BECOME LIFELONG FRIENDS.













AT ASHIANA GREENS  
A LIFE DESERVES TO BE LIVED.  
AND LIVED WELL.

---



ASHIANA  
ADVANTAGE

OUR URBAN DESIGN SKILLS AND EXPERTISE IN SITE LAYOUT PLANNING AND DEVELOPMENT IS UNMATCHED. WITHIN THE FRAMEWORK OF GOVERNMENT BYE-LAWS WE CREATE OPTIMUM SPATIAL PLANS.



Assured safety  
OF INVESTMENT

THE BEST LIVING SPACES NEED THE BEST  
**FACILITY MANAGEMENT  
& MAINTENANCE**

ASHIANA GREENS offers you hassle free living.  
That's because a trained team is working behind  
the scenes to take care of you.

24 x 7



SEWAGE TREATMENT PLANT



RAINWATER HARVESTING

MAINTENANCE OF EQUIPMENTS  
LIKE GENERATOR,  
WATER FILTRATION PUMP  
AND OTHER  
ELECTROMECHANICAL  
EQUIPMENTS

OUTDOOR CLEANING



CLUB MANAGEMENT



STREET LIGHTING



LANDSCAPING

**GREENCITY**  
MANAGEMENT PVT. LTD.

A SUBSIDIARY OF ASHIANA HOMES PVT. LTD.  
SPECIALISING IN RESIDENTIAL FACILITY MANAGEMENT



## ASHIANA GREENS IS A PROJECT OF ASHIANA HOMES AND

**GRREEN TRIVENI**

When it comes to Jaipur nobody knows it better than the The Green Triveni Developer. The Group understands the region, and its expertise in real estate investment is well known. The Group works with a single minded philosophy of 'Creating value for all its stake-holders.'

The Grreen Triveni Developer has always strived to develop products and services that match the expectations of its customers. The aim is to create spaces that enable you to get the best of what life has to offer.

We create spaces that are of unparalleled quality and reflects timelessness. And believe in our team of dedicated professionals who have made it possible.



ASHIANA PALM COURT, NH-58, GHAZIABAD



ASHIANA UPPAN, INDRAPURAM



BLACK GOLD APT., GREATER NOIDA



VILLA ANANDAM, NH-58, GHAZIABAD





THE GREEN TRIVENI DEVELOPER. BOTH HAVE PROVEN TRACK RECORD OF SAFETY OF INVESTMENT.



ASHIANA GREENS, INDIRAPURAM



ASHIANA ORCHIDS, GREATER NOIDA



ASHIANA LE RESIDENCY, NH-24, GHAZIABAD



ASHIANA SILVER CREST, GURGAON



CLASSIC PERSONAL FLOOR, GURGAON



ROYAL LAGOON, BHUBANESWAR

**Ashiana**  
The art of home

Ashiana Homes has completed 30 glorious years in the housing development sector. It has established its reputation as a real estate developer that provides **quality of construction, safety of investment and integrity of commitment.**

The Group started in late 80's when quality housing was totally unheard of. Since 1997 Ashiana Homes has been focused in Delhi/National Capital Region (NCR). It has built over 34 lacs sq.ft. of residential and commercial space and has put a smile on the faces of more than 4,200 families who reside in various projects at Indirapuram, Greater Noida, Ghaziabad and Gurgaon. Expanding its national footprint, Ashiana Homes is now in Jaipur and Bhubaneswar.

**Some of Ashiana Homes' completed residential projects are:**

- ASHIANA GREENS – INDIRAPURAM
- ASHIANA UPVAN – INDIRAPURAM
- ASHIANA ORCHIDS – GREATER NOIDA
- BLACK GOLD APT. – GREATER NOIDA
- ASHIANA HERITAGE – GHAZIABAD
- ASHIANA PALM COURT – GHAZIABAD
- ASHIANA LE RESIDENCY – GHAZIABAD
- CLASSIC PERSONAL FLOORS – GURGAON
- ASHIANA SILVER CREST – GURGAON
- ROYAL LAGOON PAHSE 1 – BHUBANESWAR



PROJECT BY

GREEN TRIVENI

Ashiana  
The art of home



LAYOUT PLANS  
FEATURES & SPECIFICATIONS



Ashiana  
GREENS

at  
SIKAR ROAD, JAIPUR

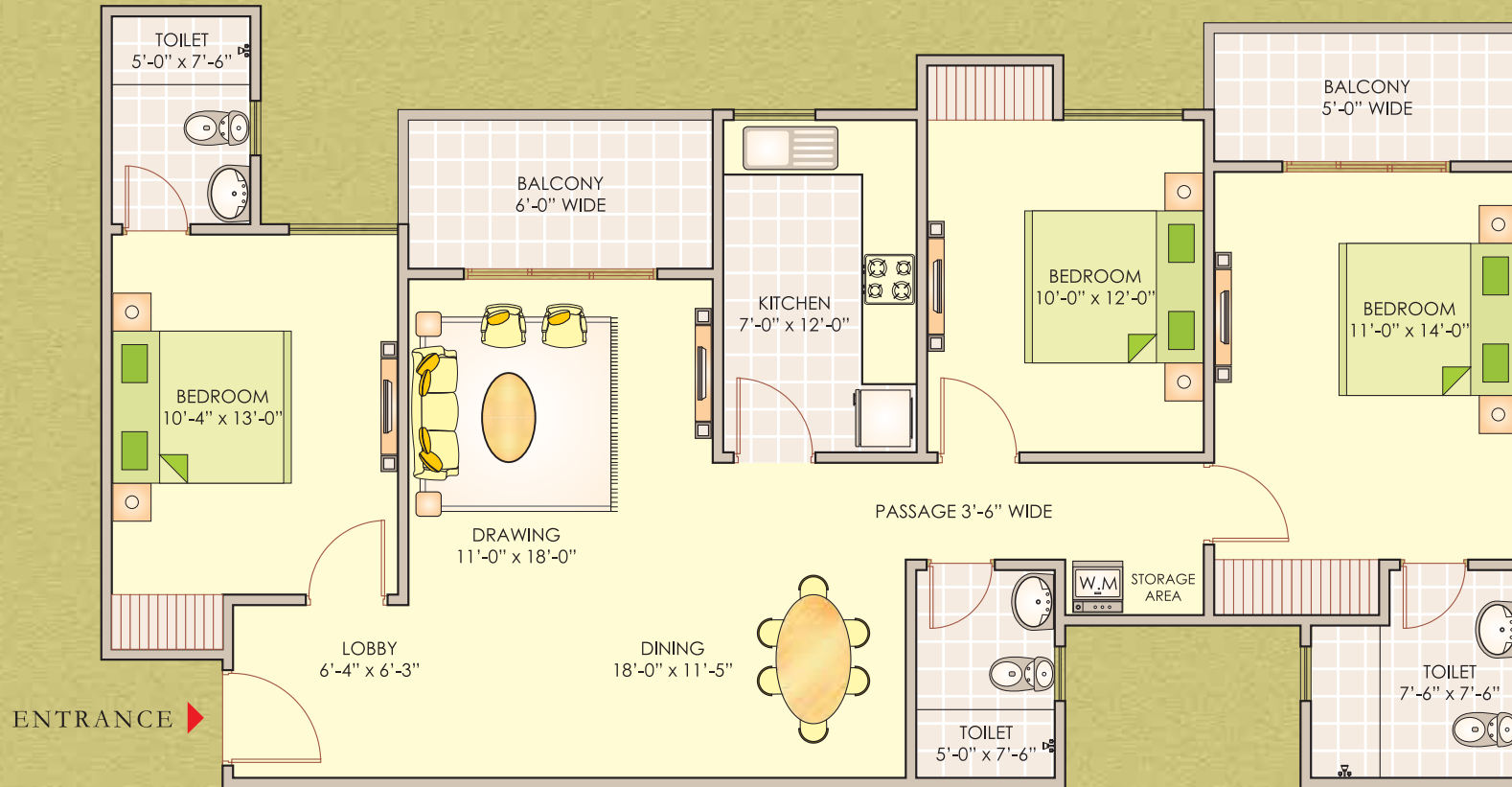




# TYPE-A1

## 3 BEDROOMS + 3 TOILETS

**SUPER AREA: 1600 SQ.FT.**  
**148.69 SQ.M.**



1 SQ.MTR = 10.76 SQ.FT.  
NOT TO SCALE, INDICATIVE ONLY.

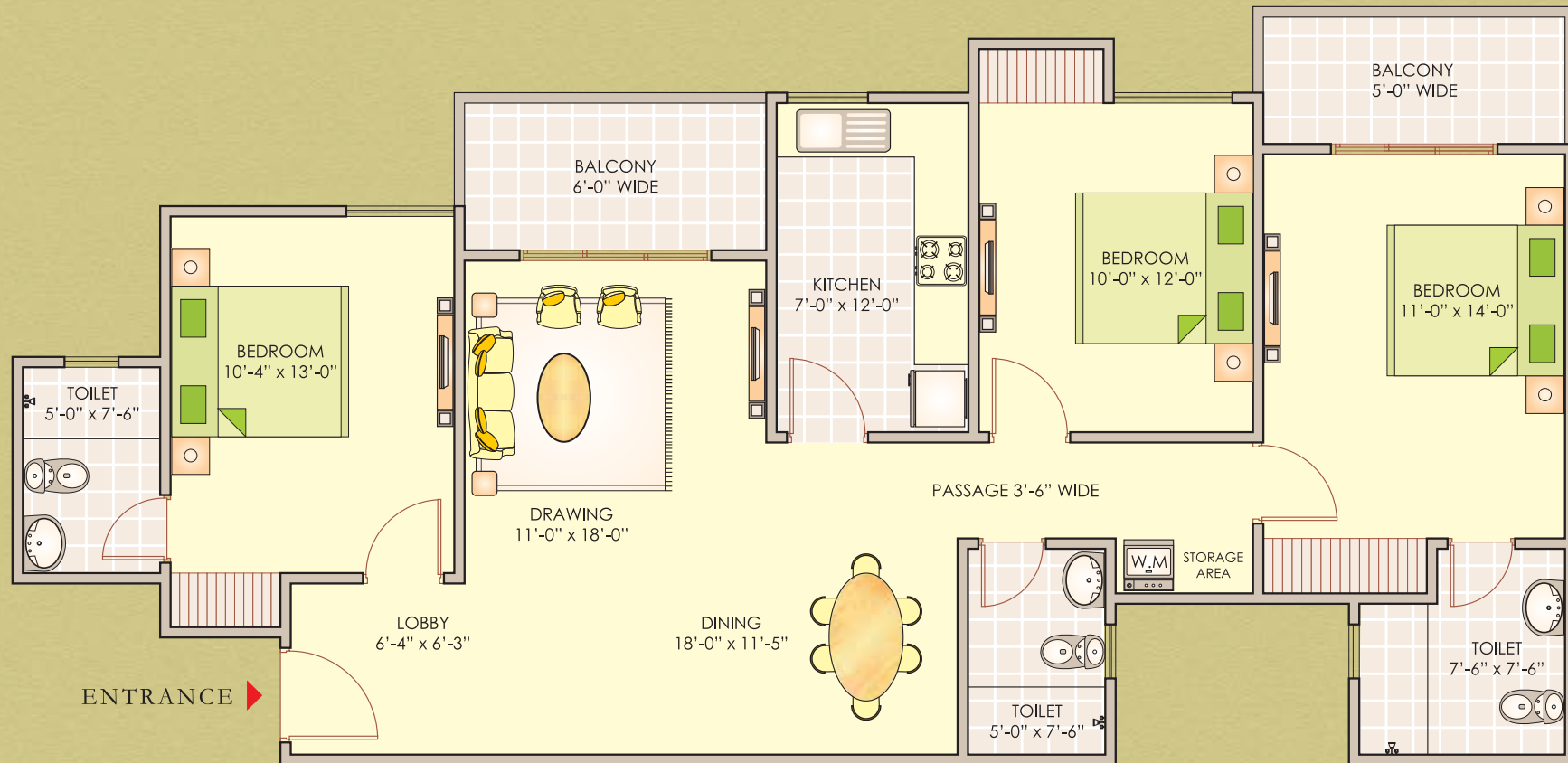




# TYPE-A2

## 3 BEDROOMS + 3 TOILETS

**SUPER AREA: 1600 SQ.FT.**  
**148.69 SQ.M.**



1 SQ.MTR. = 10.76 SQ.FT.  
NOT TO SCALE, INDICATIVE ONLY.





# TYPE-A3

## 3 BEDROOMS + 3 TOILETS

**SUPER AREA: 1600 SQ.FT.**  
**148.69 SQ.M.**



1 SQ.MTR. = 10.76 SQ.FT.  
NOT TO SCALE, INDICATIVE ONLY.





# TYPE-B1

## 2 BEDROOMS + 2 TOILETS

**SUPER AREA: 1250 SQ.FT.**  
**116.17 SQ.M.**



1 SQ.MTR. = 10.76 SQ.FT.  
NOT TO SCALE, INDICATIVE ONLY.



# APARTMENT SPECIFICATIONS

|              |                 |   |
|--------------|-----------------|---|
| STRUCTURE    |                 | EARTHQUAKE RESISTANT RCC FRAMED STRUCTURE   |
|              | TREATMENT       | ANTI-TERMITE TREATMENT DURING VARIOUS STAGES OF CONSTRUCTION  |
| WALL FINISH  | INTERNAL        | PLASTER, ACRYLIC OIL BOUND DISTEMPER (OBD) IN PASTEL COLOUR. CEILING-WHITE OBD  |
|              | EXTERNAL        | TEXTURE PAINT   |
| FLOORING     | DRAWING/DINING  | VITRIFIED TILES   |
|              | MASTER BEDROOM  | VITRIFIED TILES   |
|              | OTHER BEDROOMS  | VITRIFIED TILES   |
|              | BALCONIES       | CERAMIC TILES   |
|              | STAIRCASE       | CERAMIC TILES/KOTA STONE OR EQUIVALENT FLOORING   |
| TOILET       | WALLS           | CERAMIC TILES UP TO 7 FEET HEIGHT   |
|              | FLOORING        | ANTI-SKID CERAMIC FLOOR TILES   |
|              | FITTINGS        | HOT & COLD WATER SUPPLY PIPE LINE WITH CP FITTINGS OF REPUTED MAKE. MIRROR & TOWEL RAIL SHALL BE PROVIDED   |
|              | SANITARYWARE    | WHITE/PASTEL COLOUR VITREOUS CERAMIC SANITARYWARE OF REPUTED MAKE   |
| KITCHEN      | PLATFORM        | WORKING PLATFORM WITH GRANITE COUNTER WITH STAINLESS STEEL SINK AND DRAIN BOARD   |
|              | WALL            | 2 FEET CERAMIC TILES DADO ABOVE WORKING PLATFORM  |
|              | FLOORING        | ANTI-SKID CERAMIC TILES   |
|              | FITTINGS        | HOT & COLD WATER SUPPLY PIPE LINE WITH CP FITTINGS OF REPUTED MAKE  |
| WINDOWS      | FRAME & SHUTTER | POWDER COATED ALUMINIUM / UPVC WINDOW FRAMES & SHUTTERS WITH GLAZING  |
| DOORS        | INTERNAL DOORS  | MOULDED SKIN DOOR SHUTTERS PAINTED IN 2 COATS OF SYNTHETIC ENAMEL PAINT<br>ALL FRAMES OF HARD WOOD DULY PAINTED<br>INTERNAL BEDROOM DOORS SHALL HAVE MORTICE LOCKS & STANDARD ALUMINIUM HARDWARE  |
| WATER SUPPLY |                 | FILTERED WATER SUPPLY THROUGH CENTRALIZED WATER FILTRATION PLANT  |
| POWER BACKUP |                 | 1 KW* IN 2 & 3 BEDROOM APARTMENTS. COMMON AREAS INCLUDING ONE LIFT IN EACH BUILDING   |
| ELECTRICAL   |                 | <ul style="list-style-type: none"> <li>• ADEQUATE LIGHT POINTS &amp; POWER POINTS IN ALL ROOMS, TOILETS &amp; KITCHEN</li> <li>• COPPER WIRING OF REPUTED BRAND IN CONCEALED PVC CONDUITS</li> <li>• REPUTED MODULAR SWITCHES FOR LIGHT &amp; POWER POINTS</li> <li>• TV AND TELEPHONE POINTS IN ALL BEDROOMS &amp; DRAWING/DINNING</li> <li>• PROVISION FOR INTERNET FACILITY IN ALL THE ROOMS</li> <li>• PROVISION FOR GEYSER POINTS IN ALL THE TOILETS AND KITCHEN</li> <li>• PROVISION FOR REFRIGERATOR AND AQUAGUARD POINTS IN THE KITCHEN</li> <li>• DISTRIBUTION BOARD WITH MCB'S OF REPUTED MAKE</li> </ul> |

\* ON EXTRA COST

NOTE : 1) COLOR & DESIGN OF TILES MAY CHANGE SUBJECT TO AVAILABILITY AND DISCRETION OF THE DEVELOPER.

2) VARIATION IN COLORS/TEXTURE OF VITRIFIED & CERAMIC TILES, WOOD/WOODEN PRODUCTS MAY OCCUR.

3) DEVELOPER / COMPETENT AUTHORITY RESERVES THE RIGHT TO MODIFY / ALTER THE SPECIFICATION FOR THE BETTERMENT OF THE PROJECT.



## FEATURES & FACILITIES WITHIN THE COMPLEX

|   |
|---|
| GATED RESIDENTIAL COMPLEX BOUNDED FROM ALL FOUR SIDES FOR SAFETY & SECURITY OF THE RESIDENTS                                  |
| WIDE LANDSCAPE GREENS SPREAD ALL AROUND WITH PLAY EQUIPMENT FOR CHILDREN  |
| POWER BACK-UP FACILITY WITHIN THE APARTMENT & COMMON AREA<br>MONTHLY RUNNING COST OF THE BACK-UP POWER SHALL BE PAYABLE EXTRA |
| MULTI LEVEL SECURITY SYSTEM   |
| INTERCOM FACILITY FOR EACH APARTMENT  |
| FILTERED DRINKING WATER SUPPLY  |
| OPEN AIR AMPITHEATRE  |
| JOGGING TRACK   |
| SEWAGE TREATMENT PLANT  |
| RAIN WATER HARVESTING   |
| UNDERGROUND ELECTRICAL CABLING AND DRAINAGE SYSTEM  |
| IN HOUSE AMBULANCE SERVICE SHALL BE PROVIDED FOR EMERGENCY USE  |
| DEDICATED PARKING AREA FOR RESIDENTS & VISITORS   |

## CLUB & GAMING FACILITY

|  |
|--|
| SWIMMING POOL WITH KIDS SPLASH POOL & SIT OUT DECK AROUND IT                                     |
| CRICKET PRACTICE NET WITH BOWLING MACHINE  |
| LAWN TENNIS COURT  |
| SPA WITH-HIS & HER MASSAGE CENTRE & STEAM ROOM   |
| FULLY EQUIPPED GYMNASIUM   |
| INDOOR GAME ROOM, POOL TABLE, TABLE TENNIS, CAROM ETC  |
| DEDICATED PLAY AREA WITH PLAY EQUIPMENT FOR CHILDREN   |
| DEDICATED SENIOR CITIZEN LOUNGE  |
| AIR-CONDITION COMMUNITY HALL EXCLUSIVELY FOR RESIDENTS ONLY FOR SMALL PARTIES & PRIVATE FUNCTION |





SALES & SITE OFFICE: SIKAR ROAD (NEAR SUN CITY), JAIPUR - 302032

CALL US AT 8824 100 100

WWW.ASHIANAGREENS.IN | EMAIL: SALES@ASHIANAGREENS.IN

---

## THE GREEN TRIVENI DEVELOPER

NEW DELHI OFFICE:

3H, PLAZA M6, DISTT. CENTRE JASOLA

NEW DELHI 110 025

TEL: 011-40564056 FAX: 011-40564040

REGD. NO. 1315

---

### PROJECT BY



THIS BROCHURE IS PURELY CONCEPTUAL, NOT A LEGAL DOCUMENT OF OFFER. ALL FLOOR PLANS, SITE LAYOUT PLANS, PERSPECTIVES, IMAGERIES, SPECIFICATIONS AND FEATURES ARE CONCEPTUAL AND INDICATIVE, AND ARE SUBJECTED TO REVISION AT THE DISCRETION OF THE DEVELOPER / ARCHITECTS OR ANY OTHER COMPETENT AUTHORITY.

1 SQ.MTR. = 10.76 SQ.FT. \*CONDITIONS APPLY.